

# Notice of Race and Sailing Instructions



## Hillsboro Inlet to Palm Beach Regatta

*(Formerly the Old Port Cove Regatta)*

*June 4th 2016*

### Schedule of Events

#### June 3, 2016

Pre-Race Party from 5:30 pm to 7:30 pm will be hosted by HISC:

At the Pavilion of the Chalfonte,

500 S. Ocean Blvd

Boca Raton, Fl 33432 (see map 1).

Please bring a dish to share and your beverage of choice.

A hot grill will be provided.

A launch service will be available for vessels anchored in the NE corner of Lake Boca.

Contact the launch on Ch 72 (this is **NOT** the race channel).

There will be a Skippers Meeting at 7:00 pm

#### June 4, 2016

The Race, First Start 10:00

PBSC will host the after race party (see map 2):

Consisting of Dinner (Cuban food, beer and wine included) and a Prize Giving.

Due to limited dock space, a launch service will be provided for vessels anchored off the PBSC. Contact the launch on Ch 72 (this is **NOT** the race channel).

### Anticipated Schedule of After Race Activities

Cocktails 4:30pm - 6:00pm

Dinner 6:00pm - 7:00pm

Trophies 7:30pm - 8:00pm

The after Race Schedule is Subject to Change: Monitor Channel 68 for Updates

# Notice of Race

**The Hillsboro Inlet Sailing Club (HISC), the Palm Beach Sailing Club (PBSC) and Castaways Sailing Club shall manage the races and assorted social activities.**

## The Rules

1. The Racing Rules of Sailing (RRS) and the Sailing Instructions will govern the Racing.
2. Any seaworthy sailing vessel that has an auxiliary engine is eligible. It is the responsibility of the Master of the vessel to determine its seaworthiness. The handicap distance of the race will be 25 miles.
3. Each vessel shall have a crew of not less than 2 persons.

## Entry & Fees

1. An Entry Fee of \$50 shall be paid to the Palm Beach Sailing Club no later than May 27, 2016. Online registration is available via [www.regattanetwork.com](http://www.regattanetwork.com).
2. This Fee will include the right to one dinner (dinner includes wine and beer as long as supplies last).
3. Extra dinners can be purchased for \$30 each via [www.regattanetwork.com](http://www.regattanetwork.com).  
Latecomers can purchase dinners for \$40 depending on availability.
4. Cancellations made before May 24, 2016 will be refundable.

## Classes & Rating

1. There will be 4 classes: Assigned Rating Class (ARC), Corinthian (COR), Jib and Main (JAM), and Multihull (MUL).
2. The Race committee will assign ratings to unrated vessels. Their decision on ratings will be final.
3. The ARC class will be the performance racing class.
4. The Corinthian class will be for cruisers who wish to carry down wind specialty sails including spinnakers.
5. The JAM classes will be a jib and main only classes.
6. The MUL class is for **cruising** catamarans only.
7. Results will be calculated using the HISC proprietary scoring system.

# Sailing Instructions

**The Notice of race will constitute part of the sailing instructions.  
All race communications will be on VHF channel 68.**

## The Start

1. The First Warning Signal will be at 9:55 with a first start at 10:00, this will be the JAM fleet. The second start will be at 10:05, this start will be the COR fleet. The third start will be at 10:10; this start will be the ARC fleet. The fourth start will be at 10:15; this start will be the MUL fleet.
2. In the event of a general recall, the fleet recalled will start at 10:20.
3. Individual recalls and restarts will be announced on VHF 68.
4. The Start area will be approximately 1 mile North of the Hillsboro Inlet. The Start will be between a staff displaying an orange flag on the beach and an orange buoy. (26 16.8N, 80 04.45W)
5. All vessels must cross the start line in a northerly direction.

## The Course

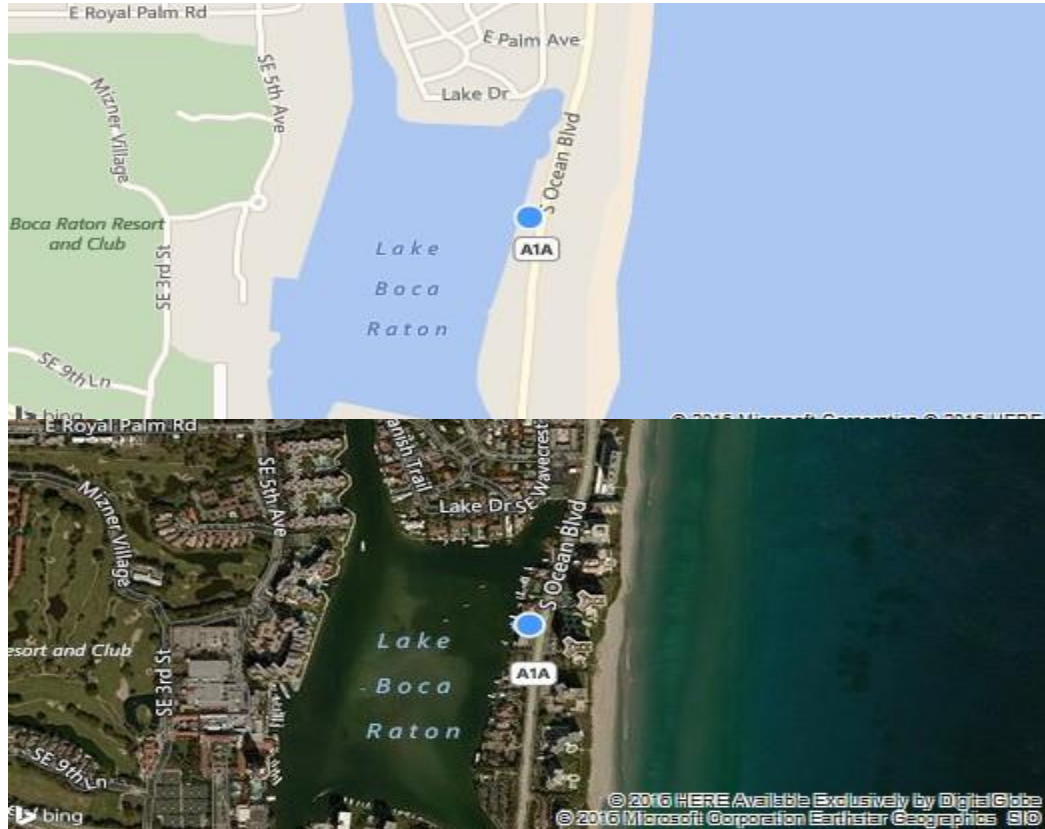
The course will be in a northerly direction from the start to the finish.

## The Finish

1. The finish line will be between the Red Number 2 buoy and an orange flag on the beach, less than 0.25 mile north of the Palm Beach Inlet.
2. Finishing vessels will inform the Race Committee when they are the next boat to finish, announcing the vessels Name and sail number on Ch 68. The Race Committee will be on station from 12:00 pm until 5:00 pm, competitors finishing after 5:00 pm must take their own time.
3. Competitors are asked where possible to note the name and sail number of the boat finishing in front and the boat finishing behind as well as their finishing time.

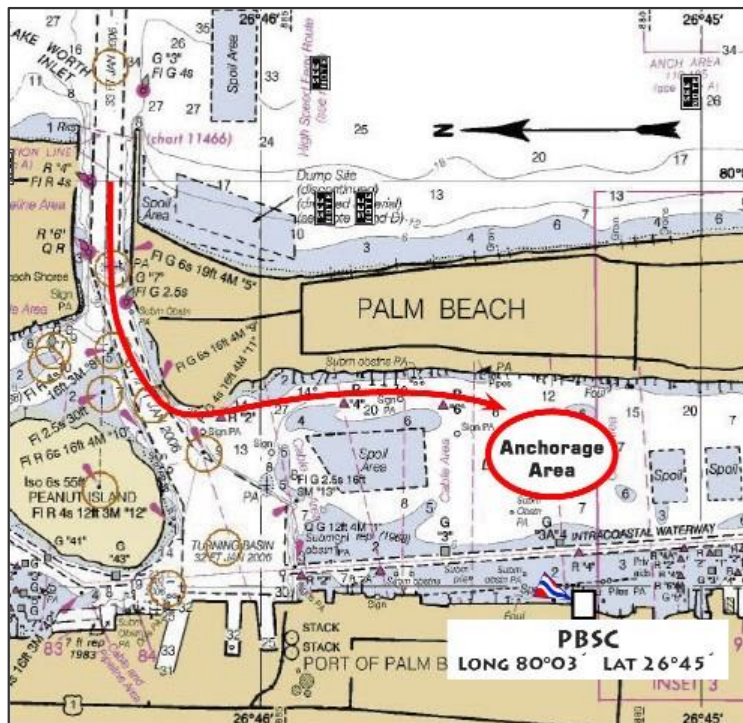
500 S. Ocean Blvd  
Boca Raton

Map # 1



Palm Beach Sailing Club  
4600 N Flagler Drive  
West Palm Beach

Map # 2



Contact the Launch Service on Channel 72 (This is NOT the Race Channel)